

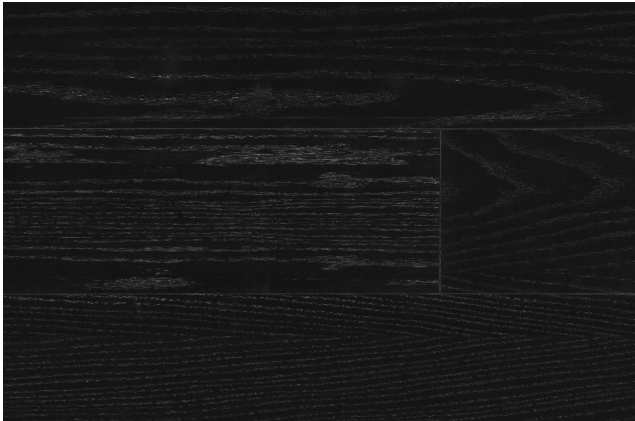


TECHNICAL DATA SHEET

HW2900 Castres

PurePlank

USAGE: (SEE HAVWOODS QUICK REFERENCE GUIDE TO CHOOSING THE CORRECT FLOOR).



PRODUCT DETAILS

| | |
|----------------------|--|
| Product Code | HW2900 |
| Product Range | PurePlank |
| Construction | Engineered |
| Specie | European Oak |
| Pattern | 1-Strip |
| Process | Brushed |
| Finish | Matt Lacquered |
| Profile | Click System |
| Edge Profile | 4-Sided Bevelled Edge |
| Top Layer | 0.6mm European Oak |
| Backing | Cork backing |
| Thickness | 9.0/0.6mm |
| Width | 190mm |
| Length | 1203mm (Fixed length) |
| Pack Size | 2.057m ² |
| Grade | Prime |
| Maintenance | Comprehensive maintenance instructions and materials are available from Havwoods for all floors. |

INSTALLATION METHODS

| | |
|--------------------------------|--------------------|
| Fully Bonded | No |
| Nailed | No |
| Floated on underlay | Yes* (recommended) |
| Over Underfloor Heating | Yes*# |

GRADING CRITERIA

Typically, prime grade has few, if any knots, and these will be of minimal size. There will also be a minimal amount of sapwood defects and filler, if any at all. Where filler is used its colour is carefully selected to complement the wood rather than to match it exactly and the colour of the filler may vary from batch to batch. There will be a relatively small amount of colour variation in the timber itself.

N.B. The product grading criteria is inspected at each mill visually and should be taken as an approximation only. Please ask for further details

TECHNICAL CRITERIA

| | |
|---------------------------------------|-----------------------------------|
| Origin | Europe |
| Responsible Certification | FSC® Certified (SGSCH-COC-008968) |
| Janka Hardness Rating | 1,120 lbf (4,980N) |
| Formaldehyde Emission | E1 (EN 717-1:2006) |
| Pentachlorophenol Emission | < 5ppm (CEN/TR 14823) |
| Slip testing | 91/28 PTV (CEN/TS 15676:2007) |
| Reaction to Fire Certification | Cfl-s1 (EN 13501-1) |
| Thermal Conductivity | λ 0.20 W/m K (EN 12664) |

* Subject to compatible subfloor and correct installation (see Installation Guidelines) including sensors.

Temperature of top-face must never be allowed to exceed 27°C. UFH protocol to control temperature conditions is recommended.

INSTALLATION AND WARRANTY

All Havwoods floors must be installed by a competent installer who will have the necessary skills and take individual site circumstances into account. Havwoods warranty will apply only to floors which have been installed by a competent flooring installer comparable to BS8201 in the UK or equivalent standards worldwide.

© This technical data sheet was written by Havwoods International. At the time of writing and publication of the sheet, all information is specified correctly. The company reserves the right to change the specifications of this product at any time without prior notice to third parties. The photographs used in this sheet are intended only as illustrations. No rights can be derived from them.

20-FEBRUARY-2019/EU



Havwoods Limited, Carnforth Business Park, Oakwood Way, Carnforth LA5 9FD
T. +44(0)1524 737000 F.+44(0)1524 737001
info@havwoods.co.uk www.havwoods.co.uk